

Polyclonal Antibody to Fission 1 (FIS1)

Catalog No. B-IO-10211

Reactivity Human, Mouse, Rat

Storage Store at -20°C. Avoid freeze / thaw cycles.

Applications WB; IHC; ICC; IP.

Host Rabbit

Product alias: CGI-135; TTC11; Tetratricopeptide Repeat Domain 11; Mitochondrial fission 1 protein

Note: *Centrifuge before opening to ensure complete recovery of vial contents.*

Purification: Antigen-specific affinity chromatography followed by Protein A affinity chromatography

Traits: Liquid

Concentration: 0.5mg/ml

UOM: 1mg(2ml)

[IMMUNOGEN]

Immunogen: Recombinant FIS1 (Met1~Asp121) expressed in *E.coli*

[APPLICATIONS]

Western blotting: 0.5-3µg/mL;

Immunohistochemistry: 5-30µg/mL;

Immunocytochemistry: 5-30µg/mL;

Optimal working dilutions must be determined by end user.

[FORMULATION]

Form & Buffer: Supplied as solution form in 0.01 M PBS, pH7.4, containing 0.02% NaN₃, 50% glycerol.

[STORAGE AND STABILITY]

Stability Test: The thermal stability is described by the loss rate. The loss rate was determined by accelerated thermal degradation test, that is, incubate the protein at 37°C for 48h, and no

obvious degradation and precipitation were observed. The loss rate is less than 5% within the expiration date under appropriate storage condition.

[IDENTIFICATION]

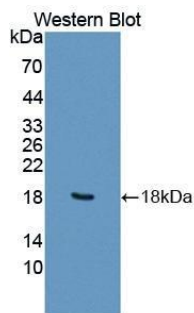


Figure. Western Blot; Sample: Recombinant FIS1, Human.

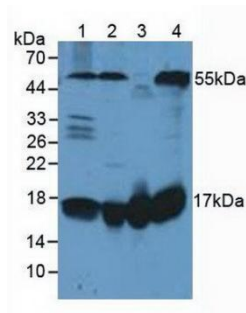
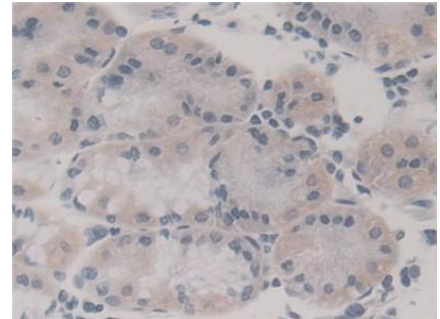


Figure. Western Blot; Sample: Lane1: Human Lung Tissue; Lane2: Human Hela Cells; Lane3: Rat Heart Tissue; Lane4: Rat Brain Tissue.



DAB staining on IHC-P;
Samples: Human Stomach Tissue;
Primary Ab: 30µg/ml Rabbit Anti-Human FIS1 Antibody
Second Ab: 2µg/mL HRP-Linked Caprine Anti-Rabbit IgG Polyclonal Antibody

For Research Use Only