

ATG4B Polyclonal Antibody

Catalog No.	B-IO-10006	Reactivity	H,M
Storage	Store at -20°C. Avoid freeze / thaw cycles.	Host	Rabbit
Applications	WB,ELISA	Isotype	IgG

Note: Centrifuge before opening to ensure complete recovery of vial contents

Immunogen Information

Immunogen	Synthetic peptide of human APG4B
Gene Accession	NP_037457
Swissprot	Q9Y4P1
Synonyms	APG4B,AUTL1

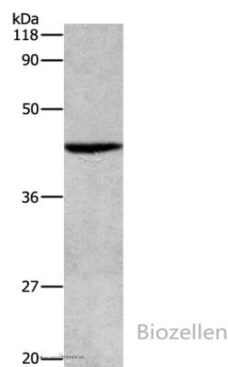
Product Information

Calculated MW	43kDa
Buffer	PBS with 0.05% sodium azide, 50% glycerol, PH7.3
Purify	Affinity purification
Dilution	WB 1:500-1:2000

Background

Autophagy is the process by which endogenous proteins and damaged organelles are destroyed intracellularly. Autophagy is postulated to be essential for cell homeostasis and cell remodeling during differentiation, metamorphosis, non-apoptotic cell death, and aging. Reduced levels of autophagy have been described in some malignant tumors, and a role for autophagy in controlling the unregulated cell growth linked to cancer has been proposed. This gene encodes a member of the autophagin protein family. The encoded protein is also designated as a member of the C-54 family of cysteine proteases. Alternate transcriptional splice variants, encoding different isoforms, have been characterized.

Images



Western Blot analysis of HeLa cell using ATG4B Polyclonal Antibody at dilution of 1:500