

## GAPDH Polyclonal Antibody

**Catalog No.** B-IO-10031 **Reactivity** H,M,R,Mk,Ch,Rb,Sh,Xenopus

**Storage** Store at -20°C. Avoid freeze /thaw cycles. **Host** Rabbit

**Applications** WB,IHC-p **Isotype** IgG

**Note:** Centrifuge before opening to ensure complete recovery of vial contents.

### Images/Immunogen Information

**Immunogen** Recombinant Protein

**Swissprot** P04406

**Synonyms** GAPDH,GAPD,CDABP0047,OK/SW cl.12,Glyceraldehyde-3-phosphate dehydrogenase,GAPDH,Peptidyl-cysteine S nitrosylase GAPDH

### Product Information

**Observed MW** 37kDa

**Buffer** PBS with 0.02% sodium azide, 50% glycerol, pH7.4

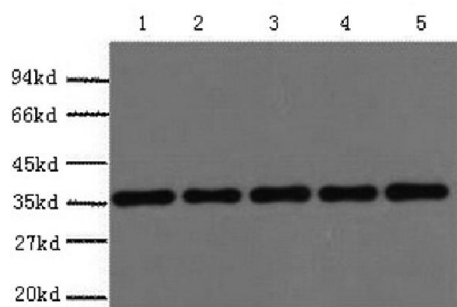
**Purify** Affinity purification

**Dilution** WB 1:2000-1:5000, IHC 1:50-1:200

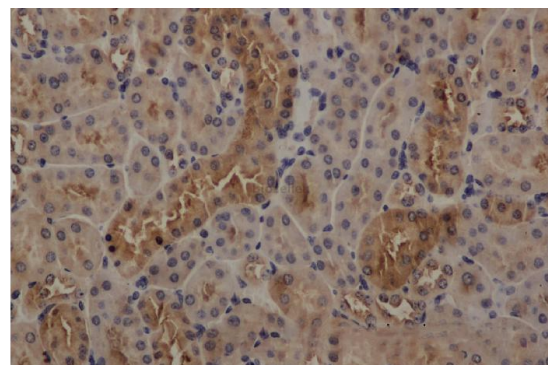
### Background

Glyceraldehyde-3-phosphate dehydrogenase (GAPDH) catalyzes the phosphorylation of glyceraldehyde-3-phosphate during glycolysis. GAPDH participates in nuclear events including transcription, binding RNA, RNA transportation, DNA replication, DNA repair and apoptosis. Being stably and constitutively expressed at high levels in most tissues and cells, GAPDH is considered a housekeeping protein. It was widely used as a control for RT-PCR and also loading control in electrophoresis and Western blotting. GAPDH is normally expressed in cellular cytoplasm or membrane, but can occasionally translocate to the nucleus post modification such as S-nitrosylation.

### Images



Western Blot analysis of 293T, Rat brain, NIH, 3T3, Sheep muscle, Rabbit testis using GAPDH Polyclonal Antibody at dilution of 1:5000.



Immunohistochemistry of paraffin-embedded mouse kidney using GAPDH antibody at dilution of 1:50